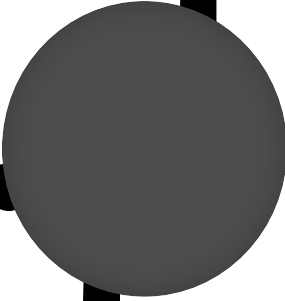
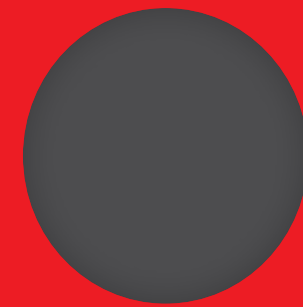


The
Gaspé
Port
of
Call



Majestic
in Every Way



The Saint Lawrence River: Where Canada Meets New England

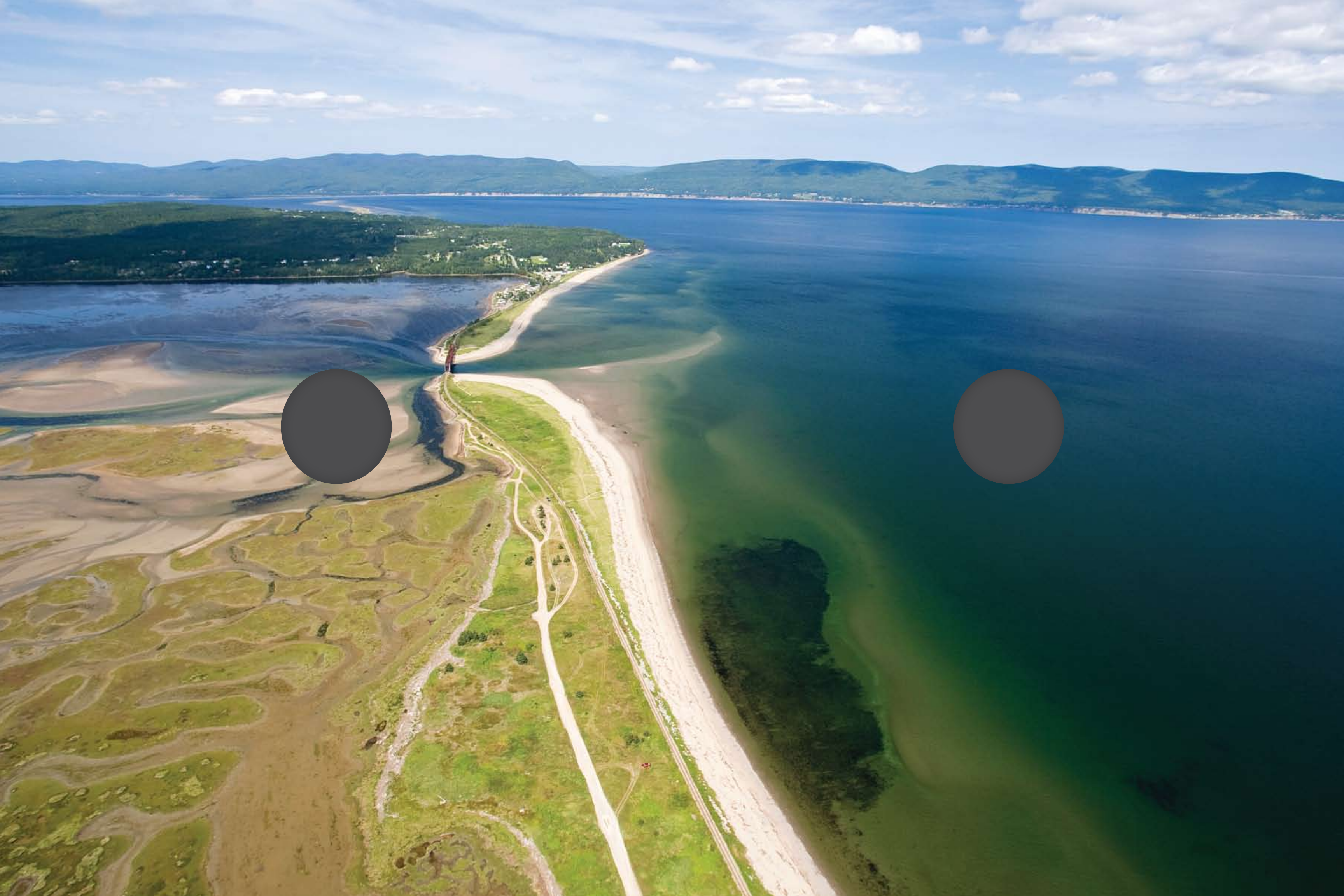


THE SAINT LAWRENCE RIVER: WHERE CANADA MEETS NEW ENGLAND

The Saint Lawrence River flows vast and unchallenged on its way to the ocean. First Nations described its all-encompassing presence as “the River that walks.” The Saint Lawrence is part of the world’s largest system of freshwater lakes – the Great Lakes – with headwaters that begin more than 3,000 kilometres (1,865 miles) away.

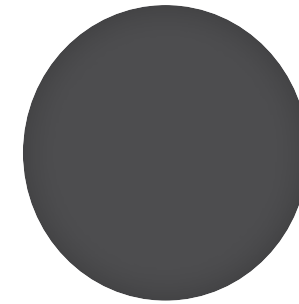
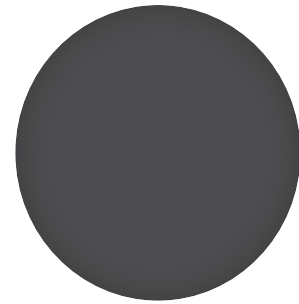
The River is everywhere, part of a rich complex of waterways coursing through the continental heartland – across the Great Plains to the Rockies and down into the Gulf of Mexico. The International Appalachian Trail extends north almost to its banks, wending its way through the Chic-Choc Mountains, the continuation of the Appalachians into Canada, and further cementing the area’s geographic and cultural connection with New England.

The mighty Saint Lawrence runs eastward past tiny fishing villages, imposing cliffs and majestic landscapes, lapping the shores of Montreal and then Quebec City, where it widens to form the Gulf of Saint Lawrence, the largest and deepest estuary in the world. Its abundant biological diversity – born of the union of seawater and freshwater – draws countless species of birds and sea creatures. With its rich and legendary history, the Saint Lawrence continues to provide today’s cruise ship passengers with a veritable feast of nature and culture.



The Gaspé: Unique in Every Way

NATIONAL GEOGRAPHIC MAGAZINE RATES THE GASPÉ IN THE TOP 50 MUST-SEE PLACES WORLDWIDE.



THE GASPÉ: UNIQUE IN EVERY WAY

Along the Upper Saint Lawrence, the Gaspé Peninsula provides some of the oldest and most intriguing attractions in the world. At 22,000 square kilometres (8,500 square miles), The Gaspé is roughly the size of New Jersey. The region's unique geography - lush arboreal forests, 350-million-year-old glacier-burnished mountains and hundreds of crystal rivers that teem with popular sport fish such as salmon and trout - gives rise to a subtle tribute: many simply call it "The" Gaspé (pronounced "gas-pay").

FRENCH-CANADIAN CULTURE

Like all of Quebec, The Gaspé provides a unique experience in North America, with festive traditions, a warm welcome, and the French

language on a daily basis. The region's heritage and living history sites continually reveal new information about local architecture, customs, folklore and crafts.

The mixture of Quebec's French history with so many other diverse cultural elements also highlights the distinct Gaspésien (gas-pay-zee-n) community. Vikings may have been the first visitors, but officially Jacques Cartier discovered it for France on July 24, 1534. The hardy ethnic mix of 90,000 inhabitants ranges from First Nations people to French, English, Irish, Norman and the descendants of seafarers from long-forgotten shores. They greet visitors enthusiastically, sharing a cozy charm that warms the heart of even the weariest traveler. More than languages and accents, it shows

up in the style of everything from commercial, religious and residential buildings to arts, crafts, music and culinary skills.

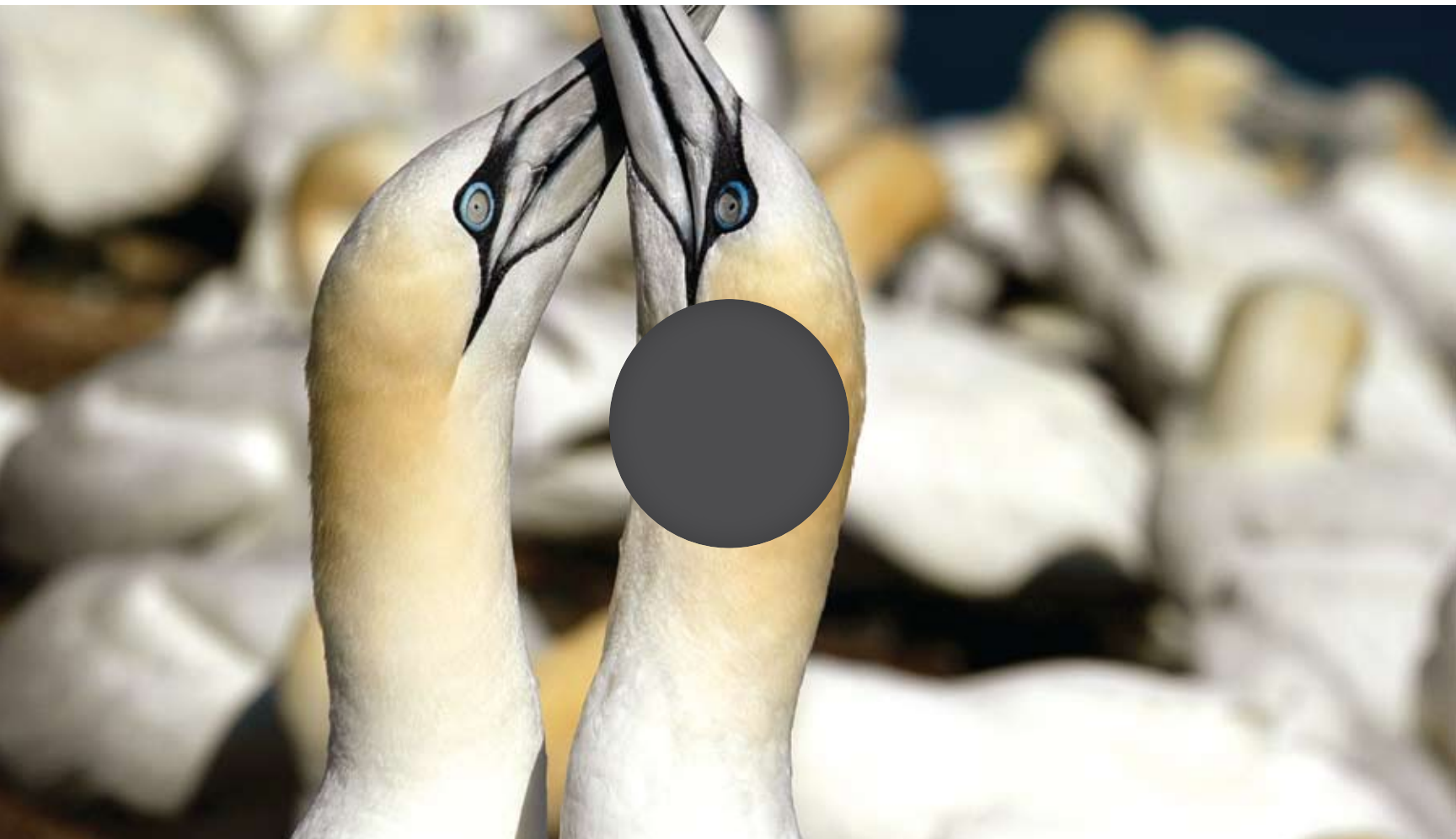
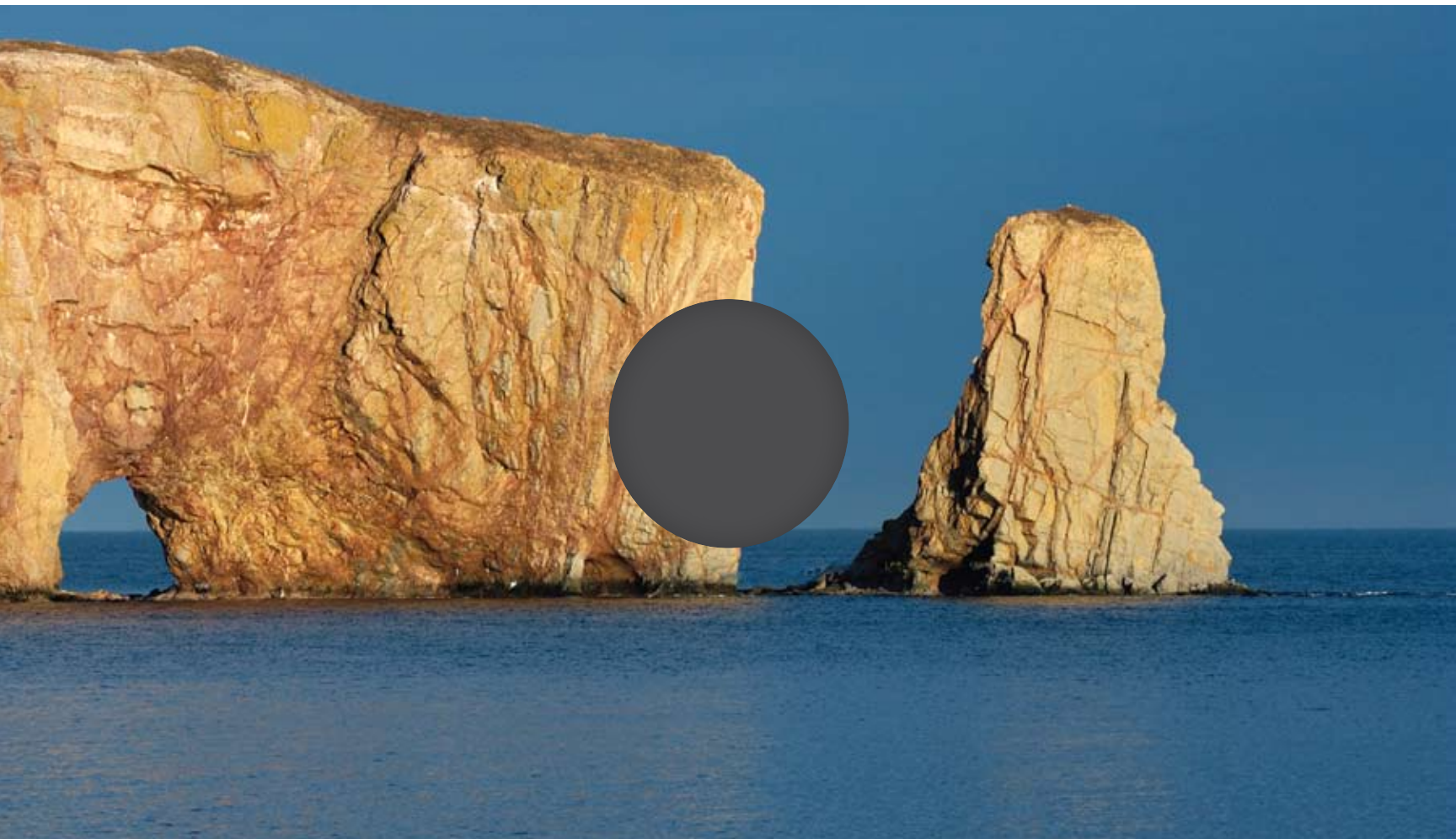
Not surprisingly, investments from the Canadian, Quebec and municipal governments have turned this region into a hot new international destination for river cruises. **In fact, National Geographic magazine rates The Gaspé in the Top 50 must-see places worldwide.**

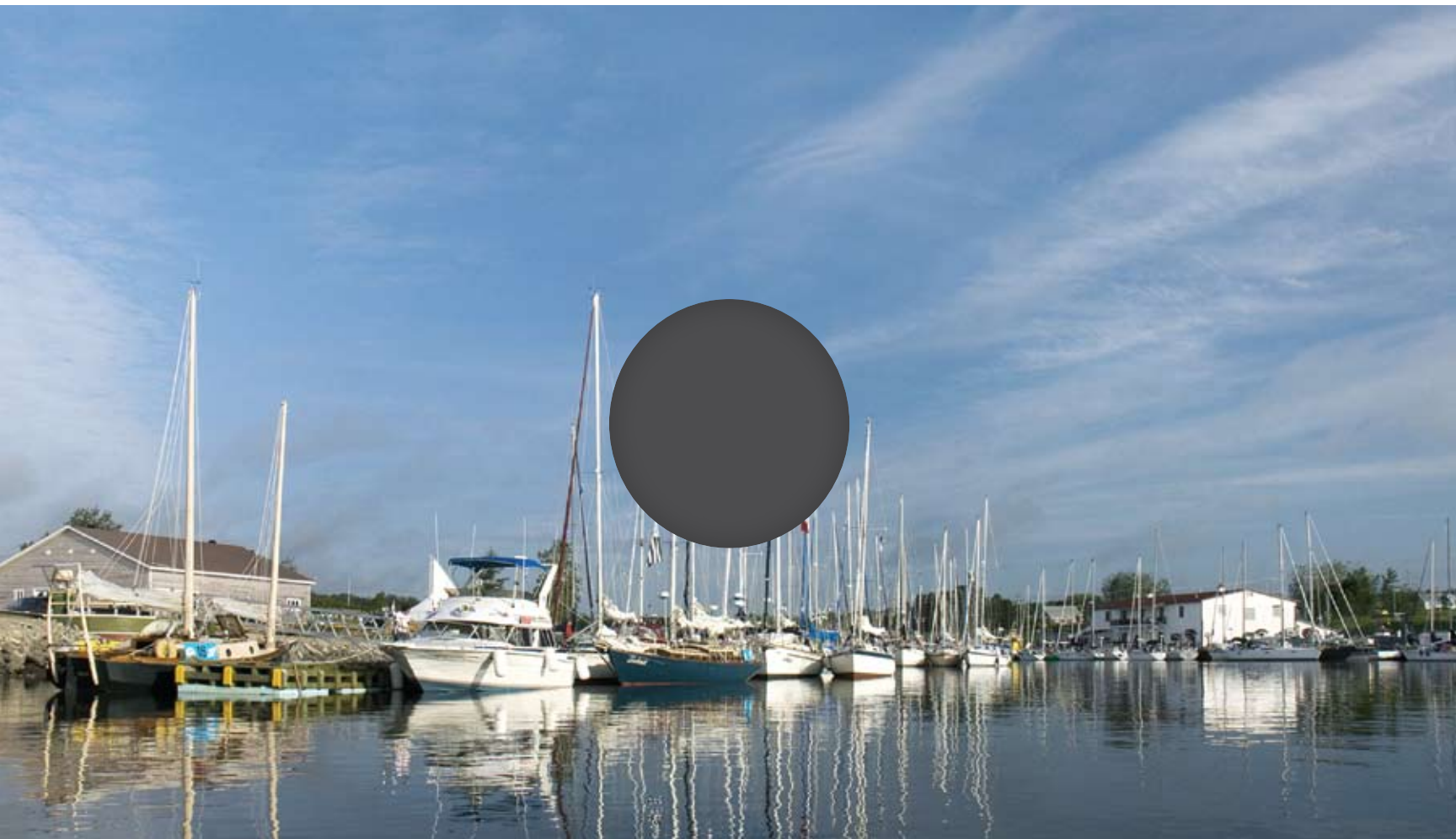
The Baie des Chaleurs (Bay of Warmth) attracts aficionados of another sort: inducted into the "Most Beautiful Bays of the World" club, a trademarked international association, the bay's fine sandy beaches and warm water (with temperatures better than anything north of Virginia) make it a perennial favourite for both beach lovers and

many endangered birds, including bald eagles, peregrine falcons and piping plovers.

The Gaspé is truly where primal myth merges with the roots of American civilization, to the great delight of visitors and modern-day explorers: picturesque villages feature modern conveniences, breathtaking vistas take the "ordinary" out of everyday shopping, and five-star zeal marks the preparation of local delicacies.

There is indeed a lot to see and do in The Gaspé - and no shortage of ways to do it in comfort and style.





The Gaspé Stopover - Something for Everyone to Enjoy

THE GASPÉ STOPOVER - SOMETHING FOR EVERYONE TO ENJOY

The Gaspé Stopover takes you to the tip of the Gaspé Peninsula. Embraced by the rich waters of the estuary and the Gulf of Saint Lawrence, this port of call will captivate you with its jagged cliffs, uneven coastline and breathtaking mountains. The "Gaspé" is thought to derive from "gespeg," a First Nations word meaning "land's end." There's no doubt that the Gaspé Peninsula will take your breath away with its strikingly beautiful land- and seascapes.

The service here is first-rate in every respect - not just people-friendly, but eco-friendly as well - with an emphasis on sustainable development. Centuries of agriculture, fisheries and urban growth have not damaged the environment's spectacular beauty...and there are certainly no plans to sacrifice it now. Instead, The Gaspé's natural splendour is a showcase for a world-class tourist trade.



Tourist Attractions:
Everything from
Natural Wonders to
Arts & Crafts

Into the Wild and the Great Outdoors /
Grand vistas of land and sea offer ample choices for any nature lover. Either way, take binoculars for a spectacular look at unspoiled habitats everywhere you go.



NATURAL PARKS

Efforts to preserve nature have created protected areas complete with amazing re-creations of pioneer life. At the end of the Appalachian Mountains, Forillon National Park of Canada offers both stunning landscapes and the fascinating history of the late 19th and early 20th centuries. With the assistance of interpreters, the carefully restored authentic buildings, thematic exhibits and films will take you back to the days before refrigeration, when the huge cod industry salted and cured its products on pebble beaches and then shipped the fish worldwide.

At Parc national de l'Île-Bonaventure-et-du-Rocher-Percé, you can delve even more deeply into the past, at an information centre that was once the administration building of a fisheries company dating back to 1776.

Bird lovers can't go wrong at Bonaventure Island. A migratory bird sanctuary since 1916, it is now among the largest and most accessible sanctuaries in the world. Boat tours - which include nearby Percé Rock - run from May to October. Nearly 300 bird species have been spotted here, the most numerous being the Northern Gannet - their colony of 120,000 is the largest group of gannets on the planet.

VIEW FROM A TRAIN

The 100-kilometre (60-mile) rail journey from Gaspé Village to Percé is scenically spectacular at every turn. The train winds gently round the capes and across a breathtaking series of cliffs and bays.

Gaspé Bay, the cliffs of Forillon National Park of Canada, the sandbar at Malbaie and legendary Percé Rock merge into an outstanding panorama of Canada's East Coast.



INLAND

Most Gaspésiens live near the coast, but well-maintained inland trails can take you away from it all for backpacking, camping or mountain biking. There are hundreds of kilometres of trails, enough for a truly magnificent wilderness experience.

At Forillon, you can safely see black bears, moose, white-tailed deer and more than 245 species of birds.

COAST

Sea kayaking, scuba diving, fishing...it doesn't matter whether you prefer to skim the top of the water, move under it, or stand still in your hip waders, the waters of The Gaspé will fill your cup to overflowing.

Guided tours relive an era when First Nations people traveled in seaworthy canoes, while underwater excursions present yet another awe-inspiring landscape. And there are enough beautifully clear brooks, rivers and streams to satisfy any fishing enthusiast - and plenty of people to advise you on the perfect lure!

The Bay of Gaspé is also one of the world's most spectacular whale-watching destinations. Ten separate ecosystems help create nutrient-rich waters that attract 7 species of whales, including the world's largest creature, the blue whale, groups of 2 to 5 humpback whales, here to feed with gusto after their winter fast in tropical waters, and 100-member pods of minke whales. The whales can actually be seen from the shore. Dolphins and porpoises also take advantage of the ocean feast, along with various seal species that can be seen lounging on long flat rocks.

Arts / Culture / Heritage / Thanks to pioneer re-creations and museums, it's easy to experience the lives of early inhabitants.



CULTURE

It's easy to connect with today's artists who draw their inspiration from the unique land that is The Gaspé. Art lovers can drop in on local studios and boutiques to see age-old techniques applied in refreshing new ways.

The "Circuit des arts visuels et métiers d'art de la Gaspésie" (Gaspésie visual artists and crafters tour) actually takes you right into artists' galleries and workshops.

SHOPPING

The Gaspé may be Land's End, but there is no limit to the region's shopping opportunities. Local boutiques and artist studios provide an impressive variety of high quality, one-of-a-kind treasures.

Two modern shopping centres also serve the area, so you are never really far from the comforts of home. Regardless of the situation, the needs of tourists, cruise passengers and ships' crews can be handled easily.

Cuisine & Culture / Whether it's about food or art, local customs help you better appreciate what a community really is.



CUISINE

The classic sophistication of a restaurant or a simple homemade dish enjoyed during a visit to a local livestock or produce farm are equally important to Gaspésiens. Plus new food “art” like goat cheeses, seafood mousse, lumpfish caviar, a variety of smoked or salted fish and seafood products, emu, lamb, honey and maple jelly.

The subtle flavours of regional delicacies - lobster, snow crab, northern shrimp and fresh fish - are highly prized by gourmets the world over, including the appetizer. It's often a salmon, mollusc or crustacean dish whose delicate flavour will alert taste buds to an exciting main meal.

Port Information / Marine & Shore-Side Facilities

PORT INFORMATION / MARINE & SHORE-SIDE FACILITIES

The Port offers 2 cruise options.

1. BERTH

GASPÉ BERTH

Length: 180 m

Depth: 10 m

Apron: 32 m

TIDAL MOVEMENT

1.9 m

MARINE REFERENCES

Charts #4416 and 4485 Canadian Hydrographic Service

Latitude 48° 50' N Longitude 64° 29' W

PORT SERVICES

Fuel by truck

Fresh water

Lighting

Electricity

Dockers

Minor repairs

2. ANCHOR

Passengers enjoy the convenience of moving direct from ship-to-shore by tenders. The secure and safe wharf and gangway leads directly to the Welcome Pavilion. This provides a scenic view of the coast and downtown. Distance of anchor from the Gaspé Marina: 0.5 mile, 5-minute tender ride. Welcome Pavilion offers visitors a full range of services: gifts and signature products, phones, internet, tour and visitor information. Shuttles, car rentals, buses and taxis are located conveniently in front of the Welcome Pavilion.

WELCOME PAVILION

TENDER'S MARINE FACILITIES

SECURE AND SAFE WHARF & GANGWAY

DOWNTOWN PROXIMITY (1 MILE)

SURROUNDING VIEW OF DOWNTOWN, COAST AND WELCOME AREA

MARINE AND SHORE-SIDE FACILITIES

DEEP DRAFT OF 16 m



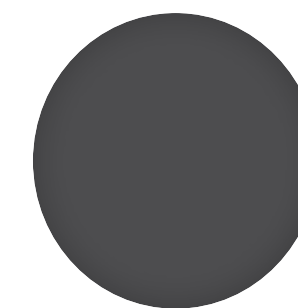
The Canada & New England Itinerary



FROM SOUTH TO NORTH

While an international boundary separates Canada and the United States, The Gaspé itself is a spectacularly vivid transitional zone between the mainland geography of New England and fascinating bio-diversity that characterizes the Gulf of Saint Lawrence. The journey from New England to Land's End in The Gaspé moves through pleasant bays, turbulent rivers, rugged mountains, teeming wildlife

habitats and pastoral communities...eventually to ancient rock formations that tower over the sea where they have stood silent for untold centuries - long before people settled anywhere near these shores.



CONTACT

TOURISM & MARKETING INFORMATION

Escale Gaspésie
27 York Blvd East, Gaspé, Quebec G4X 2K9 Canada

TRAVEL PROFESSIONAL

Stéphane Sainte-Croix / Executive Director
Email: chef@escalegaspesie.ca
Telephone 418 368-7163

MARKETING & INFO

Monica Normand / Marketing
Email: marketing@escalegaspesie.ca
Telephone 418 368-7064

PORT INFORMATION

BERTH / GASPÉ

Harbour Master
40 du Quai, Gaspé
Quebec G4X 2E5 Canada
Telephone 418 368-6679 Fax 418 368-1937

ANCHOR / GASPÉ

Stéphane Sainte-Croix / Executive Director
Email: chef@escalegaspesie.ca
Telephone 418 368-7163

PHOTO CREDITS

Agence Plein-Ciel
Fédération des gestionnaires de rivières à saumon du Québec
Jean-François Gagné
Jean-Pierre Huard, ATRG
Sébastien Larose
Marc Loïselle
Marie-Reine Mattered
Mario Bellemare, auberge la Seigneurie des Monts
Musée de la Gaspésie
ricochetdesign.qc.ca

Printed on a paper using 10% post-consumer waste
and certified FSC. It is chlorine free processed and
manufactured with renewable energy.

COORDINATION

Monica Normand

TEXTS

Lawrence Creaghan

DESIGN

paprika.com

